



## **Watermains Rehabilitated at Busy Shopping Street with Minimal Disruption**

Application:

Cure-in-place Pipe Rehabilitation Using Paltem-HL Method

Service: Fresh & Salt Water Main

Description:

- Dn150 main x 100m x 3nr;
- Dn375 main x 100m;
- Dn450 main x 100m



Equipment Set-up at Apliu Street

Location: Apliu Street, Sham Shui Po, Kowloon, Hong Kong

Project Summary:

Apliu Street is a popular tourist area famous for its wide range of bargain electronics and second-hand products offered by the numerous shops and street hawkers.

Several infrastructure upgrade projects were planned as part of a tourism program to rejuvenate the Sham Shui Po area, including pedestrainisation schemes.

To avoid potential disruption from burst mains or leakage in the future, the Water Supplies Department decided to take preventive measures to replace/rehabilitate the mains at Apliu St. in advance of other upgrading projects.

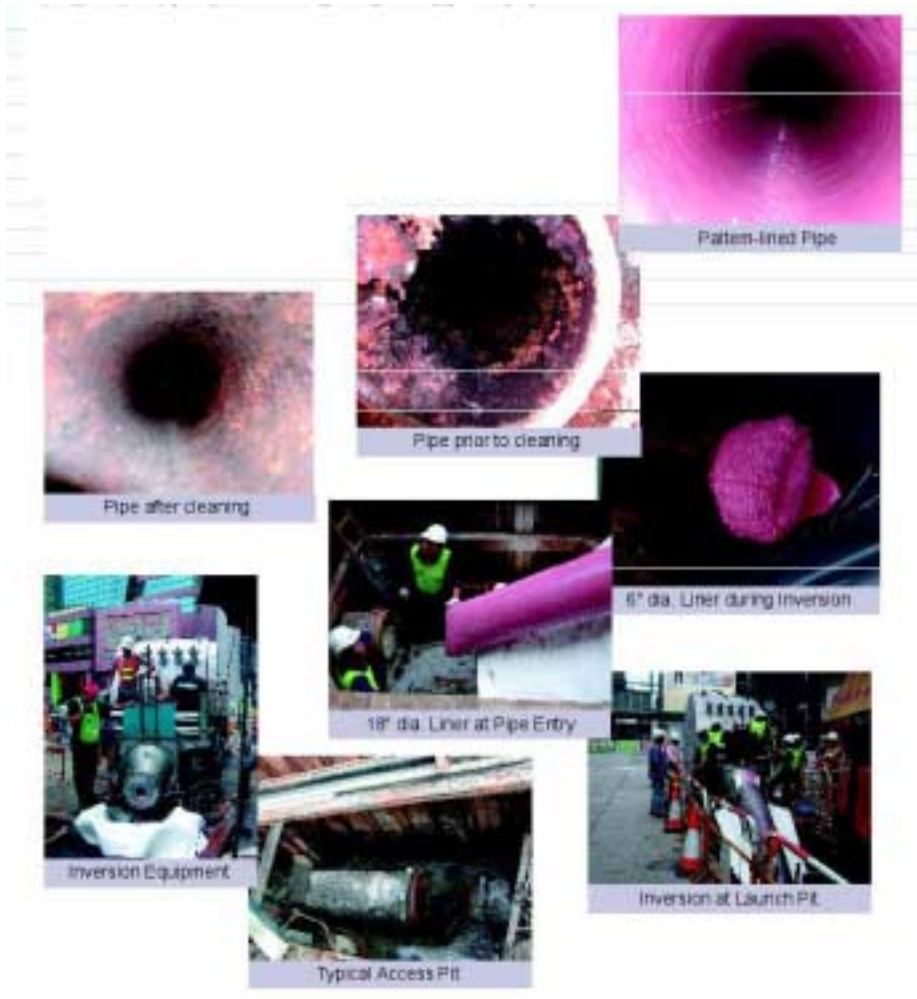
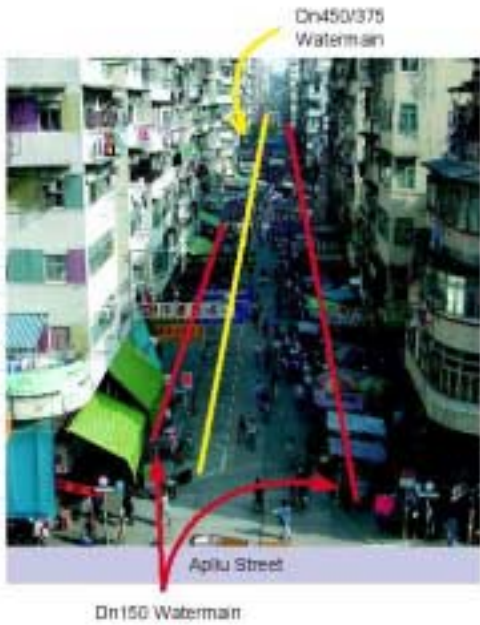
A proposal was put forward by Innopipe to rehabilitate the watermains using an innovative technique requiring minimal excavation. The proposed technique, known as Paltem-HL Method, is a patented cure-in-place pipe lining method that had been successfully used to rehabilitate potable water mains since the 1980s.

The Paltem-HL method enabled the rehabilitation works to be carried out with minimal disruption to the street hawkers as well as the public and shoppers visiting the area.

Two access pits were excavated at each end of the water main to be lined, thus only the hawker stalls located within the excavation area boundary was temporarily relocated.

*The above job story is provided by InnoPipe Company Ltd.*

# INNO PIPE



*The above job story is provided by InnoPipe Company Ltd.*